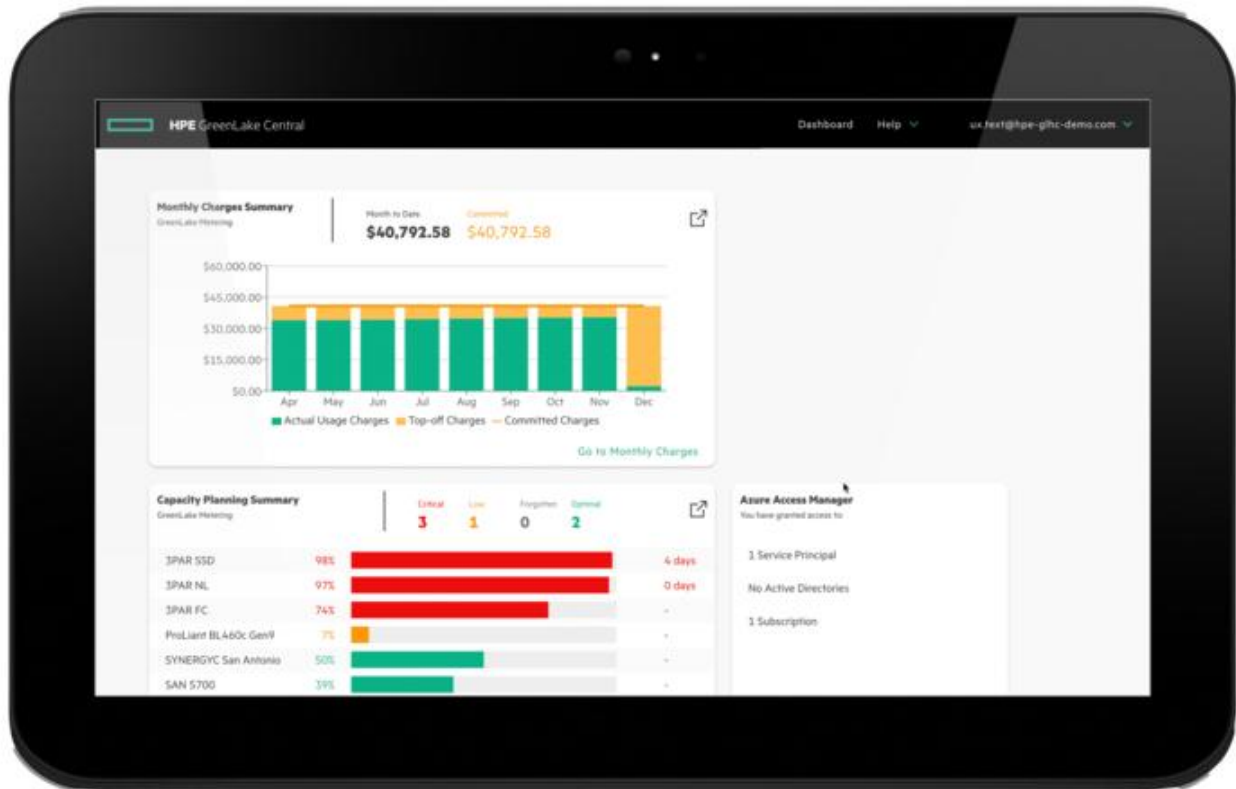


# HPE GreenLake for Block Storage

Storage SaaS



## What's new

- General purpose tier – suited for mix of

## Overview

HPE GreenLake for Block Storage is the industry's first storage as-a-service that offers self-service and 100% availability

primary and secondary workloads

- Get moving quickly and easily with instant SLA-driven quoting and rapid ordering. Choose from four key service parameters for your desired SLA.
- Transform from LUN-centric to AI-driven, app centric storage provisioning. No storage expertise required, and no more guesswork.
- Unified cloud management enables you to globally manage and monitor your entire fleet of block storage from a single SaaS-based cloud console that's accessible from any location, on any device.
- Say goodbye to endless firefighting thanks to industry-leading AI Ops for infrastructure that drives autonomous operations and helps ensure your apps are always on and always fast.
- Help ensure quality of service for your mission-critical apps by setting priorities on a specific volume or application group that ensure performance expectations are always met.

guarantee [1] built-in for mission critical environments.

Accelerate your data-first modernization with a cloud operational experience and self-service agility everywhere. Transform from IT operator to service provider, focusing on accelerating outcomes, not managing infrastructure. With this service, your organization can go faster with self-service agility - enabling line of business and DB admins to self-provision storage instantly to accelerate application deployment. You can consume as a service - starting quickly with instant quoting and ordering by simply choosing from four key attributes for desired SLA, with the added benefit of predictable monthly payments. And you can run any application without compromise while enjoying 100% availability guarantee for mission-critical apps and get an industry-leading 6x9s for all other workloads.

## Features

### Go Faster with Self-Service Agility

HPE GreenLake for Block Storage simplifies on premises storage with the speed and agility of a cloud operational experience. This makes underlying infrastructure invisible while shifting operations to be app, not infrastructure, centric.

Unlike the traditional storage management common to other storage as-a-service options, with HPE GreenLake for Block Storage, line of business and DB admins can easily procure and provision storage to accelerate app deployment—freeing up IT resources to work on strategic, higher-value initiatives.

Accelerate storage provisioning with intent based provisioning. Just select the storage tier and workload type, specify the capacity and protection policy, and let AI-driven intelligence automatically optimize your SLAs by recommending the best-suited system across your fleet for your new workload.

Intent-based Provisioning, combined with role-based access control, gives you a true self-service cloud provisioning experience, without the need for storage expertise. Enable line of business and app owners to deploy apps faster by slashing storage provisioning time from days or weeks to minutes.

With intelligent quality of service (QoS) for critical workloads you can set priorities on a specific volume or application group that ensure performance expectations are always met. In the event of resource contention, volumes with the lowest priority are capped.

### Consume as a Service

Shift from owning and maintaining data infrastructure to simply accessing and utilizing it. A flexible as-a-service consumption model enables you to avoid over- and under-provisioning concerns, CAPEX budget constraints, and complex procurement cycles.

Get started easily with instant SLA-driven quoting and rapid ordering. Instead of having to select a specific storage system or configuration, you simply choose from four key service parameters for your desired SLA: availability tier, performance level, reserve capacity, and subscription term.

Scale on-demand and as necessary, with buffer capacity for unexpected workloads or usage demands.

Shift from heavy upfront costs to a transparent and predictable monthly subscription.

Consuming as a service shortens project deployment times, frees up capital and IT resources, aligns spending with business needs, and boosts financial flexibility and operational speed.

**Run any Application Without Compromise**

Meet your desired SLA with mission-critical, business-critical, and general-purpose block storage tiers—with the highest levels of availability and ultra-fast performance.

HPE GreenLake for Block Storage provides 100% availability guaranteed [1] for mission-critical applications and an industry-leading 99.9999% uptime [2] for all other workloads versus the typical 99.99% offered by competitive storage offerings.

Accelerate mission-critical apps with an all-NVMe mission-critical storage service featuring predictable high-performance, ultra-low latency and 100% availability guaranteed[1].

Harness maximum efficiency for business-critical apps with a best price performance business-critical storage service—designed for fast, reliable data access and 99.9999% measured [2].

Leverage a cost-optimized storage service for general-purpose workloads—with flexible scale and no more tuning, trade-offs, or wasted resources.

[1] 100% availability guarantee: [hpe.com/psnow/doc/a00058506enw?from=app&section=search&isFutureVersion=true](https://hpe.com/psnow/doc/a00058506enw?from=app&section=search&isFutureVersion=true)

[2] 99.9999% uptime : [hpe.com/psnow/doc/a00058506enw?from=app&section=search&isFutureVersion=true](https://hpe.com/psnow/doc/a00058506enw?from=app&section=search&isFutureVersion=true)



For additional technical information, available models and options, please reference the [QuickSpecs](#)

## HPE Pointnext Services

[HPE Pointnext Services](#) brings together technology and expertise to help you drive your business forward and prepare for whatever is next.

### Operational Services from HPE Pointnext Services

[HPE Pointnext Tech Care](#) provides fast access to product-specific experts, an AI-driven digital experience, and general technical guidance to help enable constant innovation. We have reimaged IT support from the ground up to deliver faster answers and greater value. By continuously searching for better ways to do things—as opposed to just fixing things that break—HPE Pointnext Tech Care helps you focus on achieving your business goals.

[HPE Pointnext Complete Care](#) is a modular, edge-to-cloud IT environment service that provides a holistic approach to optimizing your entire IT environment, and achieving agreed upon IT outcomes and business goals through a personalized and customer-centric experience. All delivered by an assigned team of HPE Pointnext Services experts.

**HPE Integration and Performance Services** help you customize your experience at any stage of your product lifecycle with a menu of services based on individual needs, workloads, and technologies.

- Advise, design, and transform
- Deploy
- Integrate and migrate
- Operate and improve
- Financial Services
- GreenLake Management Services
- Retire and sanitize
- IT Training and personal development

### Other related services

[HPE Education Services](#) delivers a comprehensive range of services to support your people as they expand their skills required for a digital transformation. Consult your HPE Sales Representative or Authorized Channel Partner of choice for any additional questions and support options.

**Defective Media Retention** is optional and allows you to retain Disk or eligible SSD/Flash Drives replaced by HPE due to malfunction.

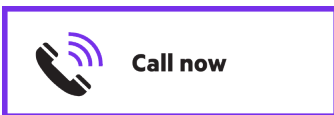
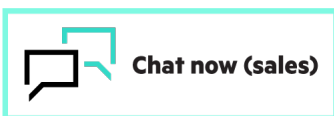
## HPE GreenLake

[HPE GreenLake](#) is HPE's market-leading IT as-a-Service offering that brings the cloud experience to apps and data everywhere – data centers, multi-clouds, and edges – with one unified operating model. HPE GreenLake delivers public cloud services and infrastructure for workloads on premises, fully managed in a pay per use model.

If you are looking for more services, like **IT financing solutions**, please [explore them here](#).

[Explore HPE GreenLake](#)

Make the right purchase decision.  
Contact our presales specialists.



- Buy now**
- Share now**
- Get updates**

**Hewlett Packard  
Enterprise**

© Copyright 2023 Hewlett Packard Enterprise Development LP. The information contained herein is subject to change without notice. The only warranties for Hewlett Packard Enterprise products and services are set forth in the express warranty statements accompanying such products and services. Nothing herein should be construed as constituting an additional warranty. Hewlett Packard Enterprise shall not be liable for technical or editorial errors or omissions contained herein.

Parts and Materials: HPE will provide HPE-supported replacement parts and materials required to maintain the covered hardware. Parts and components that have reached their maximum supported lifetime and/or the maximum usage limitations as set forth in the manufacturer's operating manual, product quick-specs, or the technical product data sheet will not be provided, repaired, or replaced as part of these services.

Image may differ from the actual product  
[PSN1014658010USEN](#), January, 2023.